

Doodles on the ceiling

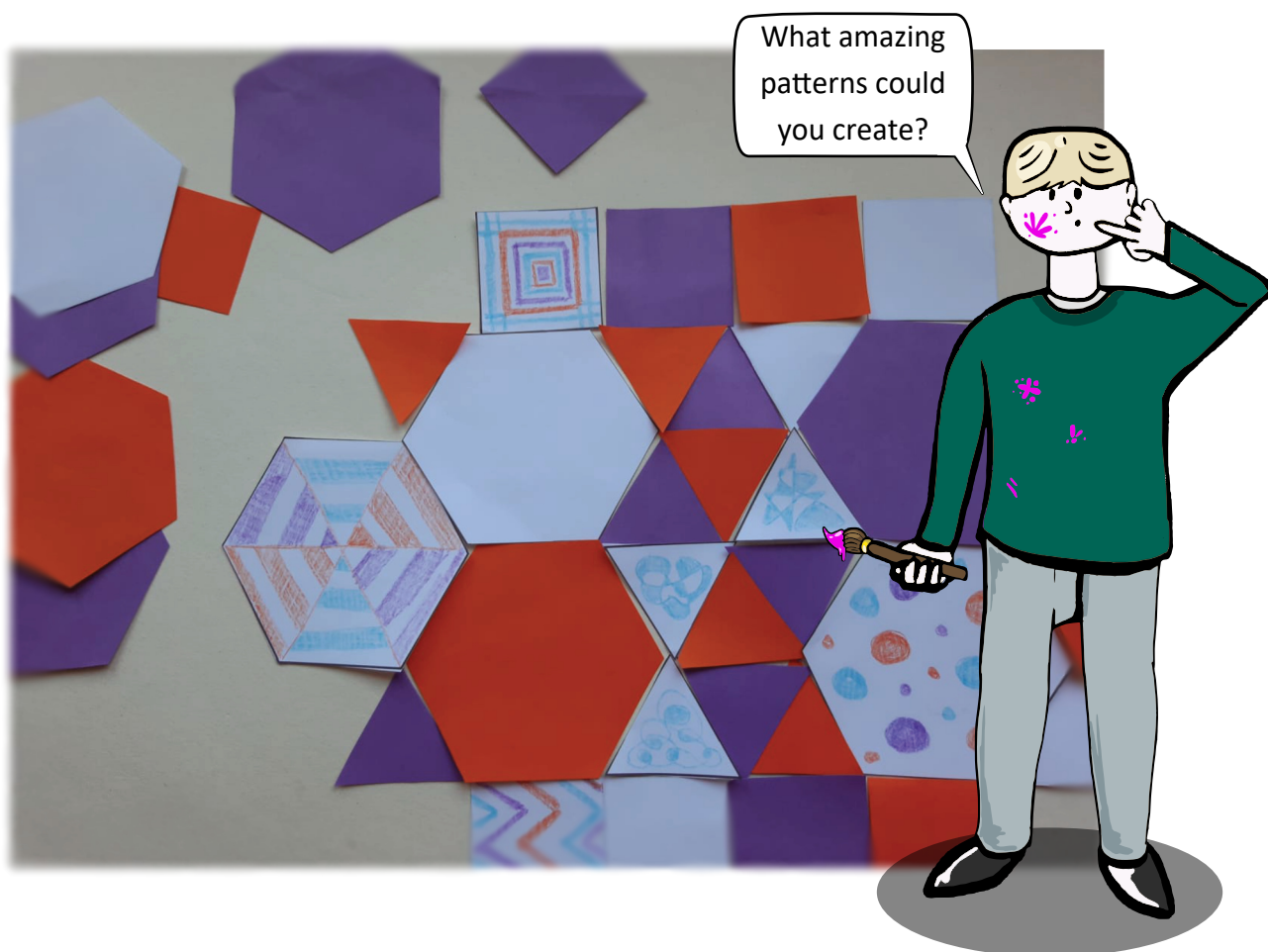
The Great Chamber was designed to make visitors say 'Wow!' when they entered.

Look up in wonder at the amazing plaster ceiling and see how all the patterns and shapes fit together.



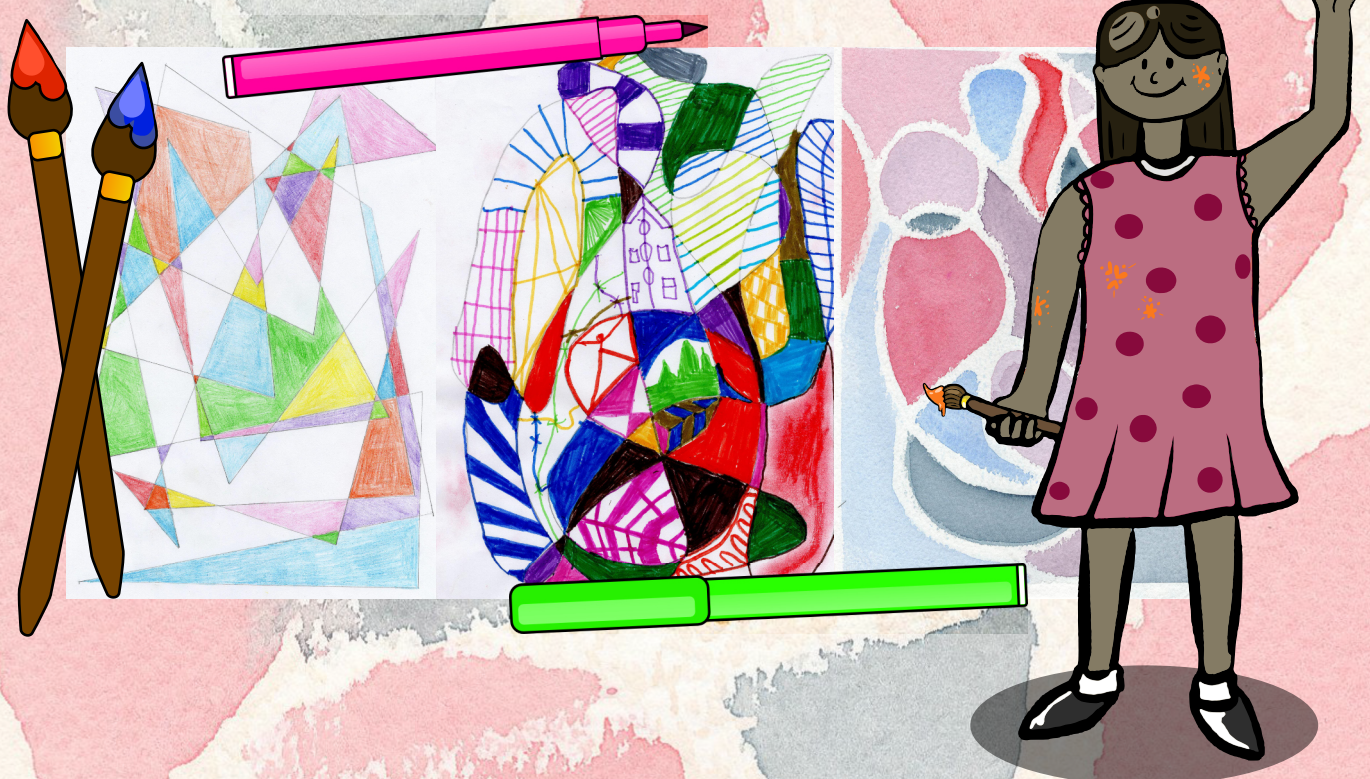
Piecing patterns

The shapes on pages 3 and 4 can fit together. Print them out, colour them in and cut them out. Or print several on coloured papers. Play around and see what amazing patterns you can make.



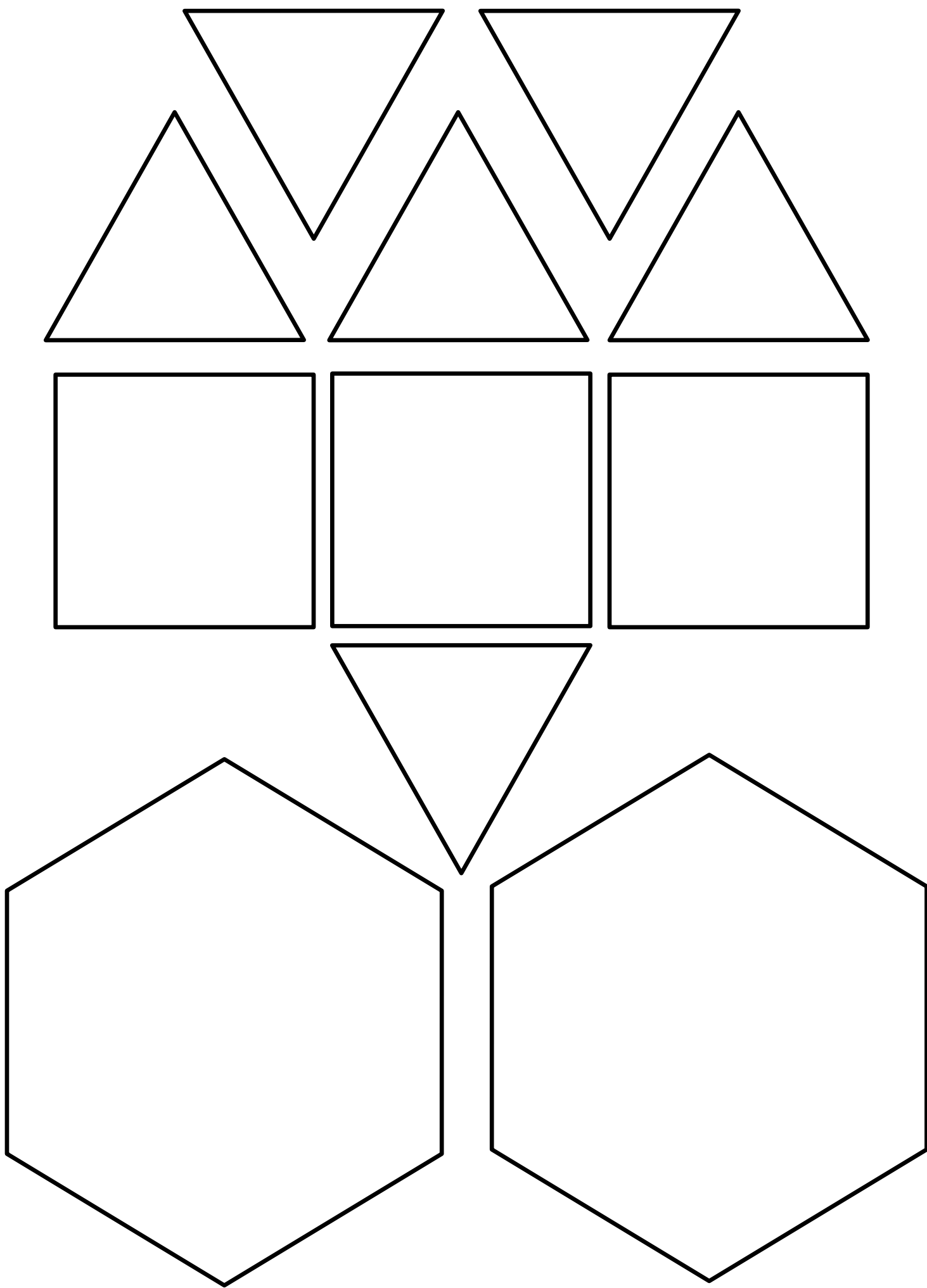
Wander-ful doodles

Take a pencil for a wander on a piece of paper. Fill the page with a wandering line in curves or corners. Colour each little section. Give it a colour theme, or go rainbow. Add patterns, stripes, spots or zigzags to larger areas. Can you colour it so that no two neighbouring sections are the same?



Further Ideas

- If you use a candle instead of a pencil, and water-based paint, you can create a cool design with white lines.
- Brush thin, pale-colour water paint over the whole page to reveal your doodle.
- Let it dry completely, then try painting in the sections in different shades of just a few colours



Here's a trickier one to try.
Cut out these birds and see how they match up.

