



the  
Charterhouse

# Wedding Packages

The following packages are designed to help you perfectly realise your own vision of this very special day.

Please note that all prices exclude VAT at the prevailing rate.



# Ceremony or blessing only

---

Our highly experienced team will ensure that your day runs smoothly and to the highest standard. The following packages can be further tailored to your choices and complemented by our additional services.

The Charterhouse holds a wedding licence so legally binding ceremonies can be performed within all the rooms apart from the Charterhouse Chapel (blessing only).

Please contact Islington Council to check the registrar availability before booking your preferred space.

Included:

- 3-hour venue hire anytime between 2pm and 6pm
- Alternative space for the registrar interview and refreshments for 4 pax (mineral water, tea and coffee)
- Dedicated event manager and 2-5 front of house staff depending on the size of your party
- Mahogany bentwood chairs for the guests along with top table and chairs for signing (if required)
- Unmanned cloakroom facilities

Venue	15 - 30 guests	31 - 60 guests	61 - 99 guests	100 - 120 guests
<b>Chapel (blessing only)*</b>	Flat venue hire rate - £700 (up to 200 guests)			
<b>Governors' Room</b>	Flat venue hire rate - £400 (up to 40 guests)			
<b>Norfolk Cloister</b>	£55 pp	£40 pp	£30 pp	£20pp
<b>Great Chamber</b>	-	£100 pp	£65 pp	£45 pp
<b>Great Hall</b>	-	£150 pp	£80 pp	£60 pp

\*- Please note that our Chapel is part of our public Museum - opening times: Tues – Sat 11.00 – 17.30. If you wish to hire this space exclusively during Museum opening hours, extra charge of £350.00 +vat per hour may apply. Please ask our events team for more details.  
All prices exclude VAT at the prevailing rate.

# Ceremony & reception

---

This package enhances your wedding experience with a post-ceremony reception, where your guests are offered canapés and Prosecco. This package includes room setup – poseur tables, drinks station and serving staff. Our highly experienced team will ensure smooth running of the reception and the highest standard maintained throughout. This can be further tailored to your choices and complemented by our additional services – please see pages 7-12.

Included:

- Ceremony details as per previous page
- Additional venue for 90min drinks and canape reception
- Furniture (poseur tables with tablecloths and chairs)
- Choice of table lights or candle holders with real flame candles
- Charterhouse classic glassware
- Half a bottle of Prosecco per guest, soft drink alternatives and 6 canapes per guest

Chapel* ceremony followed by a reception in the...	15 - 30 guests	31 - 60 guests	61 - 99 guests	100 - 140 guests
Chapel Cloister*	£70 pp	£55 pp	-	-
Old Library	£80 pp	£70 pp	£50 pp	-
Norfolk Cloister or Norfolk Garden	-	£80 pp	£65 pp	£45pp
Great Chamber	-	£100 pp	£80 pp	£70 pp
Great Hall	-	-	£115 pp	£100 pp

\*- Please note that our Chapel is part of our public Museum - opening times: Tues – Sat 11.00 – 17.30. If you wish to hire this space exclusively during Museum opening hours, extra charge of £350.00 +vat per hour may apply. Please ask our events team for more details. All prices exclude VAT at the prevailing rate.



Norfolk Cloister ceremony followed by a reception in the...	15 - 30 guests	31 - 60 guests	61 - 99 guests	100 - 140 guests
Old Library	£90 pp	£75 pp	£60 pp	-
Great Chamber	£110 pp	£95 pp	£80 pp	£65 pp
Great Hall	-	£150 pp	£130 pp	£110 pp

Great Chamber ceremony followed by a reception in the...	15 - 30 guests	31 - 60 guests	61 - 99 guests	100 - 140 guests
Old Library	£95 pp	£85 pp	£75 pp	-
Norfolk Cloister or Garden	£110 pp	£95 pp	£80 pp	£65 pp
Great Hall	-	£175 pp	£160 pp	£140pp

Great Hall ceremony followed by a reception in the...	15 - 30 guests	31 - 60 guests	61 - 99 guests	100 - 140 guests
Old Library	-	£130 pp	£115 pp	-
Great Chamber	-	£175 pp	£160 pp	£140 pp
Norfolk Cloister or Garden	-	£150 pp	£130 pp	£110 pp

All prices exclude VAT at the prevailing rate.

# Ceremony, reception & wedding breakfast

This package includes everything you need to make your special day complete. With exceptional quality service and VIP treatment in stunning surroundings, this will be an unforgettable experience for you and your guests.

Why not create even greater impact and enhance this evening with some amazing choices of crockery, glassware and beautiful flower arrangements – see pages 7-12.

Included:

- Ceremony details as per previous page
- Alternative space for 1hr pre-dinner drinks and canape reception
- Dedicated event manager and waiting staff
- Unmanned cloakroom facilities
- Furniture (poseur, dining tables and chairs)
- Premium choice of table linen and napkins
- Charterhouse classic crockery, silverware and glassware
- 2 glasses of Champagne and 4 canapes per person for the reception; extra glass for a toast served with dinner
- 3 course meal, premium wine – half a bottle per person
- Unlimited soft drinks and mineral water – still and sparkling
- After dinner tea/coffee and petit fours

Ceremony in the Chapel* followed by...	15 - 30 guests	31 - 60 guests	61 - 99 guests	100 - 120 guests
Reception – Old Library Breakfast – Norfolk Cloister	£175 pp	£155 pp	£140 pp	£115 pp
Reception – Old Library Breakfast – Great Chamber	£215 pp	£190 pp	£165 pp	£145 pp
Reception – Old Library or Norfolk Cloister Breakfast – Great Hall	-	£215 pp	£200 pp	£180 pp

All prices exclude VAT at the prevailing rate.

Ceremony in the Norfolk Cloister followed by...	15 - 30 guests	31 - 60 guests	61 - 99 guests	100 - 120 guests
Reception – Old Library Breakfast – Great Chamber	£220 pp	£190 pp	£ 170 pp	£155 pp
Reception – Old Library Breakfast – Great Hall	-	£225 pp	£210 pp	£190 pp

Ceremony in the Great Chamber followed by...	15 - 30 guests	31 - 60 guests	61 - 99 guests	100 - 120 guests
Reception – Old Library Breakfast – Norfolk Cloister	£220 pp	£190 pp	£170 pp	£155 pp
Reception – Old Library Breakfast – Great Hall	-	£245 pp	£225 pp	£205 pp

All prices exclude VAT at the prevailing rate.

# Upgrades and add-ons

Champagne upgrade	£8 extra per bottle
Extra course	£12 (cheese, intermediate course)
Extra canapes	£3 per canape
Cash bar (wine, beers)	£200 (setup and staff fee)
Cocktail bar (up to 100 guests)	£700 (hire and staff fee)
Printed menus	£2 per menu
Place cards	£1 per person
Extra linen	£18 per tablecloth
AV equipment (handheld and lapel microphone, speakers)	£50
Staging	£100
Guildhall School of Music and Drama string quartet (students)	£700 (other options available)
Tour of the Charterhouse	£10 per guest
Cloakroom staff (2 staff members)	£200
Extra front of house staff (minimum 4 hours)	£25 per hour
Extra event host (minimum 4 hours)	£30 per hour
Museum closure (all day)	£1800
Master's Court lanterns	£80
Uplighters	£50
3 branch candelabra and real flame candles	£10
Photoshoot location fee (included in reception or dinner package)	£300 per hour (supervisor included)

All prices exclude VAT at the prevailing rate.

# Further upgrades and flowers

We work closely with production companies and clients to produce the perfect event, with the linen, furniture, flowers and lighting all reflecting the event theme and brief.

We have access to an attractive and diverse range of specialist tableware. There is an enormous choice of different styles of china, cutlery and glassware that can be chosen depending on your taste and budget. We would be delighted to create mood boards and show you examples of unusual and dramatic ideas to enhance your event.

Flowers and table centres have a stunning effect at any event. Prices can vary hugely but we have come up with some suggestions for you.

We will always be delighted to offer creative ideas to suit your event and budget.

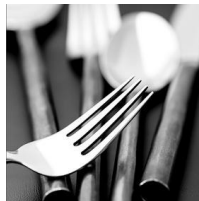
Here are just a few of our most popular choices...



## Cutlery



**OLD ENGLISH - INCLUDED**  
Elegance and simplicity defines the Old English collection, the design for which dates back to the 1760s.



**SIAM - £5 pp**  
Crafted from a single piece of stainless steel, this cutlery range has an earthy, handmade appeal.



**ATHENA BLACK - £8 pp**  
A stylish and unusual cutlery collection with a chrome-nickel stainless steel upper body and a sleek ebony effect resin handle.



**PEWTER - £10 pp**  
Evokes medieval banquets in the pattern, hallmark and texture of the handles. An eye-catching mix of the old and the new.



**EBONY - £12 pp**  
Manufactured from high quality 18/10 stainless steel. Features sleek black rounded handles with mirror-polished detailing.



**CORINTHIAN GOLD - £15 pp**  
Modelled on Corinthian columns and crafted in beautifully formed stainless steel. Silver-coloured heads and golden handle.

## Crockery



**THE CHARTERHOUSE CREST - INCLUDED**  
Our classic Charterhouse collection featuring burgundy red rim and the Charterhouse crest.



**WHITE & GOLD - £10 pp**  
Fine white chinaware with a gold rim. A classic heritage design in fine bone china.



**WEDGWOOD CREAM - £14 pp**  
The Georgian styling is drawn from Wedgwood's original 18th century archives and the most aristocratic of their patterns.



**OSAKA - £18 pp**  
Unusual shapes with surprising details in an eye-catching mix of colours from pure black and bright white through to ivory, earth and mineral blue.



**ROYAL CROWN DERBY - £20 pp**  
Renowned for its craftsmanship and quality. Smooth and sophisticated, contrasting with the textured and tactile pieces.



**LEEDS CREAMWARE - £20 pp**  
Designed with a flower and foliage embossed border. Some pieces are crafted with lacework-style cutaways, others with double-twist handles.

# Glassware



## CLASSIC - INCLUDED

A traditional complete range of plain glass tableware, including glasses for wine, champagne and water tumblers.



## PURE - £5 pp

Contemporary crystal glassware by Schott Zwiesel. Elegantly angled tall glasses, on exquisitely slender stems.



## BUBBLE - £8 pp

Hand-crafted collection with organic feel. Fine clear or chunky coloured. Lovely to mix and match.



## FLORA - £10 pp

Tall slim stems, graceful bowls, delicate floral cut glass patterns and an old gold rim. Lovely old-fashioned elegance.



## BAROQUE - £12 pp

Glassware probably doesn't get much more opulent than this. A touch of luxury also available in platinum.



## BACCHUS CRYSTAL - £20 pp

Finest cut crystal with a bacchanalian motif. This collection represents a combination of quality elegance and heritage.

# Charger plates



## FROSTED GLASS - £4 pp

A fresh and contemporary range. Available in rose, green blue and mauve.



## POINT GOLD PLATE - £6 pp

Clear glass plate with gold beaded finish. Also available in platinum. Stylish and extravagant.



## PEWTER - £8 pp

Evokes medieval banquets in the pattern, but then look again and you'll see the modern elegance.



## ORO GOLD/SILVER - £8 pp

Predominantly bright white, key pieces are glazed on the outside with metallic colours. A unique plate with a stylish impact.



## SPIRAL - £8 pp

Reminiscent of tree-rings. Contemporary with organic feel. Available in clear, taupe, amber and cobalt blue.



## BAROQUE GOLD - £10 pp

A touch of luxury for grand and special occasions. Opulent royal blue and gold rim.

## Chairs



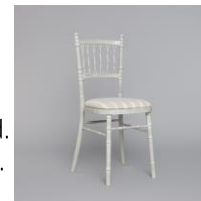
### CHEL TENHAM MAHOGANY - INCLUDED

Comfortable curved-back chair frame, classical banqueting design. Muted green seat pad.



### CAMELOT GREEN - £8

Comfortable curved-back chair frame, with bamboo-style construction. Sustainably sourced. Also available in different colours.



### CHANTILLY FRENCH - £10

An elegant chair design painted antique French grey with a chalk paint finish.



### EDWARDIAN GHOST - £15

Modelled on a contemporary interpretation of a classic design, and then given a stylish twist by producing it in ice clear acrylic.



### OAK CROSSBACK - £15

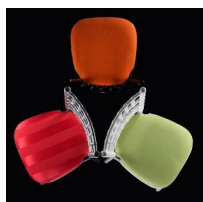
Full of rustic character with French style brasserie twist to it. Wonderful in natural settings.



### CLAREMONT CHAIR - £20

A super stylish classic. Louis XVI inspired design in a rich hardwood timber frame with white seat pad.

## Other



### ALTERNATIVE SEAT PADS - £4

Available in a wide range of different fabrics, textures and every colour you could wish for.



### TASSELS - £2

Great high end feel add on to your table dressing. Available in range of different colours.



### CORINTHIAN 5 BRANCH SILVER CANDELABRA - £90

Perfect enhancement to most luxury and prestigious events.

# Flowers



Mixed seasonal or colour specific bud-vase designs from £15.



Mixed (real flame) tea light votive combo for poseur tables from £17.



Mixed (real flame) table candle combo with small floral posy designs from £65.



Mixed seasonal or colour specific poseur table designs from £45.



Low seasonal or colour specific hand-tied vase display from £60 per design.



Large low seasonal or colour specific hand-tied vase display from £75 per design.



Low seasonal or colour specific guest table design from £75 per design.



Medium low seasonal or colour specific guest table design from £95 per design.



Large low seasonal or colour specific guest table design from £135 per design.



Tall seasonal or colour specific guest table design from £145 per design.



Medium low round seasonal or colour specific guest table design with central vase enclosed pillar candle from £85 per design.



Floral runner guest table design (per meter) from £100.



Long and low seasonal or colour specific guest table design's (approx 24" long) from £75 per design.



Medium sized registration table or bar displays from £80.



Medium sized plinth mounted focal displays from £175.

To discuss your requirements further, please contact us  
020 3817 4173  
[events@thecharterhouse.org](mailto:events@thecharterhouse.org)  
The Charterhouse, Charterhouse Square, London EC1M 6AN